

MAST SPECIFICATIONS & RATED CAPACITIES

| Mast Type | Mast Name | Max. Fork Height (mm) | Load Capacity (kg) | | | | | | | | | | | | | | | | | | | | Overall Height (mm) | | | | | | Free Lift (mm) | | | | | | Tilt Angle | |
|----------------------------------|-----------|-----------------------|--------------------|------|---------------|---------------|---------------|---------------|-----------|-----------|-----------|-----------|---------------|-----------|-----------|-----------|-----------|-----------|-----------|-----------|-----------|-----------|---------------------|------|------|---------------|--|--|----------------|--|--|--|--|--|------------|--|
| | | | Lowered | | | | | | | | | | Extended | | | | | | | | | | Without Backrest | | | With Backrest | | | | | | | | | | |
| | | | Without Backrest | | | | | | | | | | With Backrest | | | | | | | | | | | | | | | | | | | | | | | |
| | | | 1.5t | 1.8t | 2.0t | 2.5t | 3.0t | 3.5t | 1.5t-1.8t | 2.0t-2.5t | 3.0t-3.5t | 1.5t-1.8t | 2.0t-2.5t | 3.0t-3.5t | 1.5t-1.8t | 2.0t-2.5t | 3.0t-3.5t | 1.5t-1.8t | 2.0t-2.5t | 3.0t-3.5t | 1.5t-1.8t | 2.0t-2.5t | 3.0t-3.5t | | | | | | | | | | | | | |
| 2-Stage Wide View Mast | M300 | 3000 | 1500 | 1800 | 2000 | 2500 | 3000 | 3500 | 2005 | 2045 | 2090 | 3228 | 3628 | 3641 | 4040 | 4021 | 4060 | 135 | 120 | 125/130 | 135 | 120 | 125/130 | 6-10 | 6-12 | | | | | | | | | | | |
| | M330 | 3300 | 1500 | 1800 | 2000 | 2500 | 3000 | 3500 | 2155 | 2195 | 2210 | 3528 | 3928 | 3941 | 4340 | 4321 | 4360 | 135 | 120 | 125/130 | 135 | 120 | 125/130 | 6-10 | 6-12 | | | | | | | | | | | |
| | M350 | 3500 | 1500 | 1800 | 2000 | 2500 | 3000 | 3500 | 2255 | 2295 | 2310 | 3728 | 4128 | 4141 | 4540 | 4521 | 4560 | 135 | 120 | 125/130 | 135 | 120 | 125/130 | 6-10 | 6-12 | | | | | | | | | | | |
| | M370 | 3700 | 1500 | 1800 | 2000 | 2500 | 3000 | 3500 | 2355 | 2395 | 2410 | 3928 | 4328 | 4341 | 4740 | 4721 | 4760 | 135 | 120 | 125/130 | 135 | 120 | 125/130 | 6-6 | 6-6 | | | | | | | | | | | |
| | M400 | 4000 | 1450 | 1700 | 2000 | 2500 | 2950 | 3450 | 2555 | 2495 | 2510 | 4228 | 4628 | 4641 | 5040 | 5021 | 5060 | 135 | 120 | 125/130 | 135 | 120 | 125/130 | 6-6 | 6-6 | | | | | | | | | | | |
| | M450 | 4500 | 1250 | 1500 | 1950 | 2300 | 2700 | 3200 | 2805 | 2845 | 2860 | 4728 | 5128 | 5141 | 5540 | 5521 | 5560 | 135 | 120 | 125/130 | 135 | 120 | 125/130 | 6-6 | 6-6 | | | | | | | | | | | |
| M500 | 5000 | 900 | 1200 | 1800 | 2000 | 2450 | 2750 | 3055 | 3145 | 3160 | 5228 | 5628 | 5641 | 6040 | 6021 | 6060 | 135 | 120 | 125/130 | 135 | 120 | 125/130 | 6-6 | 6-6 | | | | | | | | | | | | |
| 2-Stage Full Free Wide View Mast | FM300 | 3000 | * | * | 2000 | 2500 | 3000 | 3500 | * | 2045 | 2060 | * | 3020 | 3025 | * | 4042 | 4202 | * | 1384 | 1380 | * | 978 | 838 | * | 6-12 | | | | | | | | | | | |
| | FM330 | 3300 | * | * | 2000 | 2500 | 3000 | 3500 | * | 2195 | 2210 | * | 3320 | 3325 | * | 4342 | 4502 | * | 1534 | 1530 | * | 1128 | 988 | * | 6-12 | | | | | | | | | | | |
| | FM350 | 3500 | * | * | 2000 | 2500 | 3000 | 3500 | * | 2295 | 2310 | * | 3520 | 3525 | * | 4542 | 4702 | * | 1634 | 1630 | * | 1228 | 1088 | * | 6-12 | | | | | | | | | | | |
| | FM370 | 3700 | * | * | 2000 | 2500 | 3000 | 3500 | * | 2395 | 2410 | * | 3720 | 3725 | * | 4742 | 4902 | * | 1734 | 1730 | * | 1328 | 1188 | * | 6-6 | | | | | | | | | | | |
| FM400 | 4000 | * | * | 2000 | 2500 | 3000 | 3500 | * | 2595 | 2610 | * | 4020 | 4025 | * | 5042 | 5202 | * | 1934 | 1930 | * | 1528 | 1388 | * | 6-6 | | | | | | | | | | | | |
| 3-Stage Full Free Wide View Mast | TFM400 | 4000 | 1450 | 1700 | 2000 *2000 | 2500 *2500 | 2950 *3000 | 3450 *3500 | 1930 | 1945 | 1960 | 4153 | 4628 | 4641 | 5030 | 5021 | 5060 | 1762 | 1287 | 1280 | 4045 | 841 | 860 | 6-6 | 6-6 | | | | | | | | | | | |
| | TFM430 | 4300 | 1350 | 1600 | 2000 *2000 | 2500 *2500 | 2950 *3000 | 3450 *3500 | 2045 | 2045 | 2060 | 4453 | 4928 | 4941 | 5380 | 5321 | 5360 | 1862 | 1387 | 1380 | 4345 | 941 | 960 | 6-6 | 6-6 | | | | | | | | | | | |
| | TFM450 | 4500 | 1250 | 1500 | 1950 *2000 | 2500 *2500 | 2850 *3000 | 3300 *3350 | 2095 | 2145 | 2160 | 4653 | 5128 | 5141 | 5530 | 5521 | 5560 | 1962 | 1487 | 1480 | 4545 | 1041 | 1060 | 6-6 | 6-6 | | | | | | | | | | | |
| | TFM480 | 4800 | 1150 | 1350 | 1900 *1950 | 2300 *2500 | 2750 *2950 | 3100 *3300 | 2195 | 2245 | 2260 | 4953 | 5428 | 5441 | 5830 | 5821 | 5860 | 2062 | 1587 | 1580 | 4845 | 1141 | 1160 | 6-6 | 6-6 | | | | | | | | | | | |
| | TFM500 | 5000 | 900 | 1200 | 1700 *1900 | 2100 *2450 | 2550 *2850 | 2750 *3100 | 2295 | 2295 | 2310 | 5153 | 5628 | 5641 | 6030 | 6021 | 6060 | 2112 | 1637 | 1630 | 5045 | 1191 | 1210 | 6-6 | 6-6 | | | | | | | | | | | |
| | TFM550 | 5500 | 800 | 1000 | 1300 *1850 | 1600 *2350 | 1700 *2750 | 1900 *3000 | 2465 | 2495 | 2510 | 5653 | 6128 | 6141 | 6530 | 6521 | 6560 | 2312 | 1837 | 1830 | 5545 | 1391 | 1410 | 3-6 | 3-6 | | | | | | | | | | | |
| | TFM600 | 6000 | 600 | 700 | 1050 *1700 | 1250 *2300 | 1350 *2700 | 1500 *2900 | 2700 | 2695 | 2710 | 6153 | 6628 | 6641 | 7030 | 7021 | 7060 | 2512 | 2037 | 2030 | 6045 | 1591 | 1610 | 3-6 | 3-6 | | | | | | | | | | | |

With side shifter, load capacity subtract 200kg.
*(Asterisk) is for double front wheels model.



UN FORKLIFT

F SERIES FORKLIFT TRUCK

Capacity 1.5 ton-3.5 ton (Diesel / Gasoline / LPG)

F Series, the latest internal combustion forklift has undergone a comprehensive redesign led by professional design company. This brand new design brings significant enhancements to both its appearance and performance.



ZHEJIANG UN FORKLIFT CO., LTD.

ADDRESS: NO.1,ROAD ONE,XINDENG NEW DISTRICT,FUYANG, HANGZHOU,ZHEJIANG 311404,CHINA

TEL: +86-571-8688 8355 (AMERICA)

+86-571-8886 9363 (EUROPE)

+86-571-8688 8377 (ASIA, AFRICA, OCEANIA)

E-MAIL: info@unforklift.com

PARTS INQUIRY: parts@unforklift.com

www.unforklift.com



CE CERTIFICATE



ISO14001 2004



ISO9001 2004

APPEARANCE ★

This series has smooth and streamlined body, giving a more powerful look. The sharp edges and contrast color design of the counterweight make it more attractive.

The electrical system utilizes dynamic LED taillights, imparting a futuristic and highly technological appeal to the vehicle, creating a strong visual impact.



PERFORMANCE ★★

Using internationally renowned Stage V/Tier4F, Mitsubishi 4EG, Kubota and GCT engines, featuring low emissions, high performance, and durability.



Utilizing the new narrow-groove steel mast to reduce the overall vehicle weight & enhance visibility.



Equipped with an interactive dashboard as standard for real-time monitoring.



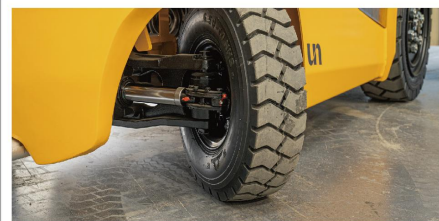
The new generation LED lighting system not only enhances energy efficiency but also improves the performance and lifespan.



Standard equipped with a load sensing steering system to enhance operational efficiency.



Use a large turning angle steering axle to reduce the turning radius of the truck.



SAFETY ★★★

The stamped overhead guard offers increased durability and reliability, significantly reducing the potential harm from impacts, collapses, or other accidents.



Universal molding of exterior parts enhance production efficiency, facilitates maintenance and replacement.

To enhance protection ratings, all key connectors and joints are waterproof.

The OPS system effectively prevents unintended forklift startup, enhancing overall driving safety.

SUPERIOR ★★★★★ ERGONOMICS

The wide-view mast provides a broader vision.



Implementing a suspension seat (option) has reduced vibrations, alleviated fatigue, and enhanced operational comfort.



The spacious foot space provides easy access for getting on and off, significantly enhancing operational comfort.



The adjustable steering column equip with a small steering wheel for more effortless operation.



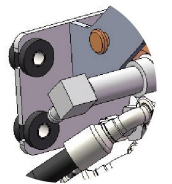
Adopting a new type of ratchet handbrake, effectively reducing operating force.



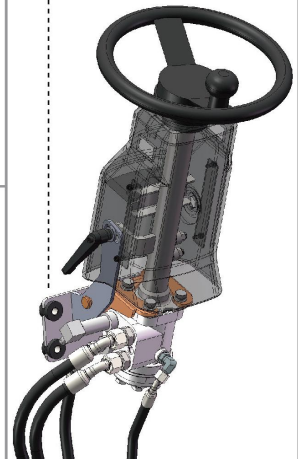
Suspension foot brakes achieve smooth braking and reduce vibrations.



The steering column bracket equipped with standard cushion pads, reducing steering wheel vibration and improving comfort.



Cushion pads



EASY MAINTENANCE

The detachable side panels make maintenance and cleaning more convenient.



The large opening angle of the engine hood makes it easier to access internal components of the forklift, facilitating easier maintenance.



ENGINE

YANMAR

Model: 4TNE92
Rated output: 32.8KW/2450RPM
Rated torque: 135.4-149.4N.M/1600RPM
No. of cylinder: 4
Bore x Stroke: 92x110MM
Displacement: 2659CC

YANMAR

Model: 4TNE98 (EU III & EPA III)
Rated output: 44.4KW/2300RPM
Rated torque: 187-207N.M/1700RPM
No. of cylinder: 4
Bore x Stroke: 98x110MM
Displacement: 3318CC

mitsubishi

Model: D04EG (EPA IV)
Rated output: 36KW/2250RPM
Rated torque: 177N.M/1800RPM
No. of cylinder: 4
Bore x Stroke: 94x120MM
Displacement: 3331CC

mitsubishi

Model: SAS (EU III)
Rated output: 35.3KW/2250RPM
Rated torque: 177N.M/1700RPM
No. of cylinder: 4
Bore x Stroke: 94x120MM
Displacement: 3331CC

KUBOTA

Model: V2403 (EPA IV/EU V)
Rated output: 43.2KW/2400RPM
Rated torque: 198.5N.M/1500RPM
No. of cylinder: 4
Bore x Stroke: 90x105MM
Displacement: 2670CC

HYUNDAI

Model: D24 (EU V)
Rated output: 48.2KW/2600RPM
Rated torque: 214N.M/1600RPM
No. of cylinder: 4
Bore x Stroke: 90x97MM
Displacement: 2392CC

ISUZU

Model: C240NKFC-01
Rated output: 34.3KW/2500RPM
Rated torque: 137.7N.M/1800RPM
No. of cylinder: 4
Bore x Stroke: 86x102MM
Displacement: 2369CC

ISUZU

Model: C240PKJ30 (EU III)
Rated output: 34.5KW/2500RPM
Rated torque: 139N.M/1800RPM
No. of cylinder: 4
Bore x Stroke: 86x102MM
Displacement: 2369CC

XINCHAI

Model: NC485BPG
Rated output: 30KW/2600RPM
Rated torque: 131N.M/1800RPM
No. of cylinder: 4
Bore x Stroke: 85x100MM
Displacement: 2270CC

XINCHAI

Model: 3E22YG51-063A
Rated output: 44.8KW/2400RPM
Rated torque: 210N.M/1800RPM
No. of cylinder: 3
Bore x Stroke: 94x107MM
Displacement: 2230CC

XINCHAI

Model: C490BP-237 (CN II)
Rated output: 36.8KW/2650RPM
Rated torque: 156N.M/1800RPM
No. of cylinder: 4
Bore x Stroke: 90x105MM
Displacement: 2670CC

XINCHAI

Model: A498BP-521 (EU III)
Rated output: 45KW/2500RPM
Rated torque: 193N.M/1800RPM
No. of cylinder: 4
Bore x Stroke: 94x107MM
Displacement: 3188CC

MAIN SPECIFICATIONS

| General | | un | | | | | | | | | |
|---------|--|--------------------|--------------|--------------|--------------|---------------|--------------|--------------|--------------------|--|--|
| 1 | Manufacturer | | | | | | | | | | |
| 2 | Model | FD15T | FD18T | FD20T | FD25T | FD30T | FD35T | | | | |
| 3 | Power Type | Diesel | Diesel | Diesel | Diesel | Diesel | Diesel | | | | |
| 4 | Rated Load Capacity | Q(kg) | 1500 | 1800 | 2000 | 2500 | 3000 | 3500 | | | |
| 5 | Load Centre | C(mm) | 500 | 500 | 500 | 500 | 500 | 500 | | | |
| 6 | Rated Lift Height | H3(mm) | 3000 | 3000 | 3000 | 3000 | 3000 | 3000 | | | |
| 7 | Free Lift Height | H2(mm) | 135 | 135 | 120 | 120 | 125 | 130 | | | |
| 8 | Fork Size (LxWxT) | mm | 1070X100X35 | 1070X100X35 | 1070-100x40 | 1070-122x40 | 1070-122x45 | 1070-122x50 | | | |
| 9 | Mast Tilt Angle (F/R, α/β)° | deg | 6°/10° | 6°/10° | 6°/12° | 6°/12° | 6°/12° | 6°/12° | | | |
| 10 | Fork Overhang (Wheel Center to Fork Face) | X1(mm) | 409 | 409 | 462 | 462 | 467 | 472 | | | |
| 11 | Rear Overhang | X2(mm) | 425 | 425 | 550 | 550 | 530 | 600 | | | |
| 12 | Ground Clearance (Bottom of Mast) | H7(mm) | 110 | 110 | 110 | 110 | 125 | 125 | | | |
| 13 | Length to Face of Fork (Without Fork) | L1(mm) | 2285 | 2285 | 2662 | 2662 | 2697 | 2772 | | | |
| 14 | Overall Width | B1(mm) | 1080 | 1080 | 1180 | 1180 | 1220 | 1220 | | | |
| 15 | Mast Lowered Height | H1(mm) | 2005 | 2005 | 2180 | 2180 | 2220 | 2220 | | | |
| 16 | Mast Extended Height (With Backrest) | H4(mm) | 4040 | 4040 | 4021 | 4021 | 4060 | 4060 | | | |
| 17 | Overhead Guard Height | H5(mm) | 2140 | 2140 | 2215 | 2215 | 2235 | 2235 | | | |
| 18 | Turning Radius (Outside) | Wa(mm) | 2035 | 2035 | 2365 | 2365 | 2425 | 2500 | | | |
| 19 | Min. Aisle width for pallets | Ast(mm) | 3644 | 3644 | 4120 | 4120 | 4180 | 4255 | | | |
| 20 | Travel Speed (No Load) | km/h | 15.6-16.6 | 15.4-16.6 | 20 | 20 | 20 | 15.6-16.6 | 15.4-16.6 | | |
| 21 | Lifting Speed (Full Load) | mm/sec | 620 | 620 | 523 | 523 | 439 | 439 | 620 | | |
| 22 | Lowering Speed(Full Load/No Load) | mm/sec | ≤600/≥300 | ≤600/≥300 | ≤600/≥300 | ≤600/≥300 | ≤600/≥300 | ≤600/≥300 | ≤600/≥300 | | |
| 23 | Max. Drawbar Pull (Full Load/No Load) | kN | 22.31/21.24 | 22.55/21.16 | 19.6/19.1 | 19.6/19.1 | 19.6/19.1 | 22.31/21.24 | 22.55/21.16 | | |
| 24 | Max. Gradeability (Full Load) | % | 20 | 20 | 29 | 29 | 26 | 23 | 20 | | |
| 25 | Tyre (Front x 2) | mm | 6.50-10-10PR | 6.50-10-10PR | 7.00-12-12PR | 7.00-12-12PR | 28-9-15-14PR | 28-9-15-14PR | 6.50-10-10PR | | |
| 26 | Tyre (Rear x 2) | mm | 5.00-8-10PR | 5.00-8-10PR | 6.00-9-10PR | 6.00-9-10PR | 6.50-10-10PR | 6.50-10-10PR | 6.00-9-10PR | | |
| 27 | Front Tread | B2(mm) | 902 | 902 | 970 | 970 | 1000 | 1000 | 902 | | |
| 28 | Rear Tread | B3(mm) | 928 | 928 | 980 | 980 | 980 | 928 | 980 | | |
| 29 | Wheelbase | Y(mm) | 1450 | 1450 | 1650 | 1650 | 1700 | 1700 | 1450 | | |
| 30 | Total Weight | kg | 2693 | 2925 | 3777 | 4017 | 4367 | 4727 | 2693 | | |
| 31 | Front Axle Weight Distribution (Full Load) | kg | 3711 | 4161 | 5026 | 5794 | 6630 | 7330 | 3711 | | |
| 32 | Rear Axle Weight Distribution (Full Load) | kg | 482 | 564 | 1751 | 1223 | 777 | 897 | 482 | | |
| 33 | Front Axle Weight Distribution (No Load) | kg | 1271 | 1232 | 1889 | 1868 | 1965 | 1867 | 1271 | | |
| 34 | Rear Axle Weight Distribution (No Load) | kg | 1422 | 1692 | 1889 | 2149 | 2402 | 2860 | 1422 | | |
| 35 | Battery | V/Ah | 12/90 | 12/60 | 12/60 | 12/60 | 12/60 | 12/60 | 12/60 | | |
| 36 | Engine Model | WG2503-L-E3-CFL-11 | | | | GK25 (EU III) | | | WG2503-L-E3-CFL-11 | | |
| 37 | Engine Manufacturer | KUBOTA | | | | GCT | | | KUBOTA | | |
| 38 | Rated Output / r.p.m. | kw | 41.3/2700 | 41.3/2700 | 35.6/2100 | 35.6/2100 | 35.6/2100 | 35.6/2100 | 41.3/2700 | | |
| 39 | Rated Torque / r.p.m. | N·m | 160/1200 | 160/1200 | 176.5/1600 | 176.5/1600 | 176.5/1600 | 176.5/1600 | 160/1200 | | |
| 40 | No. of Cylinder | 4 | 4 | 4 | 4 | 4 | 4 | 4 | 4 | | |
| 41 | Bore x Stroke | mm | 88X102.4 | 88X102.4 | 92×93 | 92×93 | 92×93 | 92×93 | 88X102.4 | | |
| 42 | Displacement | cc | 2491 | 2491 | 2472 | 2472 | 2472 | 2472 | 2491 | | |
| 43 | Fuel Tank Capacity | L | 48 | 48 | 60 | 60 | 60 | 60 | 48 | | |
| 44 | Transmission Type | HYDRAULIC | | | | | | | | | |
| 45 | Transmission Stage (FWD/RVS) | 1/1 | | | | | | | | | |
| 46 | Operating Pressure (For Attachments) | Mpa | 17.5 | 17.5 | 18.5 | 18.5 | 18.5 | 20.5 | 17.5 | | |

QUANCHAI

Model: E25-62CS3 (EU V)
Rated output: 46/2400RPM
Rated torque: 220N.M/1500-1800RPM
No. of cylinder: 4
Bore x Stroke: 88X102.5MM
Displacement: 2494CC

QUANCHAI

Model: V29-50C42 (EU III)
Rated output: 36.8KW/2500RPM
Rated torque: 190N.M/1500-1800RPM
No. of cylinder: 4
Bore x Stroke: 93X105MM
Displacement: 2850CC

QUANCHAI

Model: V25-45V42
Rated output: 33.1KW/2600RPM
Rated torque: 150N.M/1900RPM
No. of cylinder: 4
Bore x Stroke: 90X100MM
Displacement: 2540CC

XINCHAI

Model: 3E22YG51 (EU V)
Rated output: 44.8KW/2400RPM
Rated torque: 210N.M/1600-1800RPM
No. of cylinder: 4
Bore x Stroke: 94x107MM
Displacement: 2230CC

XINCHAI

Model: A498BP-521 (EU III)
Rated output: 45KW/2500RPM
Rated torque: 193N.M/1800RPM
No. of cylinder: 4
Bore x Stroke: 94x107MM
Displacement: 3188CC

MAIN SPECIFICATIONS

| General | | un | | | | | | | | | | | |
|---------|---|--------------|--------------|--------------|--------------|--------------|--------------|--------------|--------------|--------------|---------------------|---------------------|---------------------|
| 1 | Manufacturer | | | | | | | | | | | | |
| 2 | Model | FGL15T | FGL18T | FGL20T | FGL25T | FGL30T | FGL35T | FL15T | FL18T | FL20T | FL25T | FL30T | FL35T |
| 3 | Power Type | Gasoline/LPG | Gasoline/LPG | Gasoline/LPG | Gasoline/LPG | Gasoline/LPG | Gasoline/LPG | LPG | LPG | LPG | LPG | LPG | LPG |
| 4 | Rated Load Capacity | Q(kg) | 1500 | 1800 | 2000 | 2500 | 3000 | 3500 | 1500 | 1800 | 2000 | 2500 | 3000 |
| 5 | Load Centre | C(mm) | 500 | 500 | 500 | 500 | 500 | 500 | 500 | 500 | 500 | 500 | 500 |
| 6 | Rated Lift Height | H3(mm) | 3000 | 3000 | 3000 | 3000 | 3000 | 3000 | 3000 | 3000 | 3000 | 3000 | 3000 |
| 7 | Free Lift Height | H2(mm) | 135 | 135 | 120 | 120 | 125 | 130 | 135 | 120 | 120 | 125 | 130 |
| 8 | Fork Size (LxWxT) | mm | 1070X100X35 | 1070X100X35 | 1070-100x40 | 1070-122x40 | 1070-122x45 | 1070-122x50 | 1070X100X35 | 1070X100X35 | 1070-100x40 | 1070-122x40 | 1070-122x45 |
| 9 | Mast Tilt Angle (F/R, α/β)° | deg | 6°/10° | 6°/10° | 6°/12° | 6°/12° | 6°/12° | 6°/12° | 6°/10° | 6°/10° | 6°/12° | 6°/12° | 6°/12° |
| 10 | Fork Overhang (Wheel Center to Fork Face) | X1(mm) | 409 | 409 | 462 | 462 | 467 | 472 | 409 | 409 | 462 | 462 | 472 |
| 11 | Rear Overhang | X2(mm) | 425 | 425 | 550 | 550 | 530 | 600 | 425 | 425 | 550 | 550 | 600 |
| 12 | Ground Clearance (Bottom of Mast) | H7(mm) | 110 | 110 | 110 | 110 | 125 | 125 | 110 | 110 | 110 | 125 | 125 |
| 13 | Length to Face of Fork (Without Fork) | L1(mm) | 2285 | 2285 | 2662 | 2662 | 2697 | 2772 | 2285 | 2285 | 2662 | 2662 | 2772 |
| 14 | Overall Width | B1(mm) | 1080 | 1080 | 1180 | 1180 | 1220 | 1220 | 1080 | 1080 | 1180 | 1180 | 1220 |
| 15 | Mast Lowered Height | H1(mm) | 2005 | 2005 | 2045 | 2045 | 2060 | 2060 | 2005 | 2005 | 2045 | 2045 | 2060 |
| 16 | Mast Extended Height (With Backrest) | H4(mm) | 4040 | 4040 | 4021 | 4021 | 4060 | 4060 | 4040 | 4040 | 4021 | 4021 | 4060 |
| 17 | Overhead Guard Height | H5(mm) | 2140 | 2140 | 2215 | 2215 | 2235 | 2235 | 2140 | 2140 | 2215 | 2215 | 2235 |
| 18 | Turning Radius (Outside) | Wa(mm) | 2035 | 2035 | 2365 | 2365 | 2425 | 2500 | 2035 | 2035 | 2365 | 2365 | 2500 |
| 19 | Min. Aisle width for pallets | Ast(mm) | 3644 | 3644 | 4120 | 4120 | 4180 | 4255 | 3644 | 3644 | 4120 | 4120 | 4180 |
| 20 | Travel Speed (No Load) | km/h | 15.6-16.6 | 15.4-16.6 | 20 | 20 | 20 | 20 | 15.6-16.6 | 15.4-16.6 | 20 | 20 | 20 |
| 21 | Lifting Speed (Full Load) | mm/sec | 620 | 620 | 523 | 523 | 439 | 439 | 620 | 620 | 501-551 | 501-551 | 436-479 |
| 22 | Lowering Speed(Full Load/No Load) | mm/sec | ≤600/≥300 | ≤600/≥300 | ≤600/≥300 | ≤600/≥300 | ≤600/≥300 | ≤600/≥300 | ≤600/≥300 | ≤600/≥300 | ≤600/≥300 | ≤600/≥300 | ≤600/≥300 |
| 23 | Max. Drawbar Pull (Full Load/No Load) | kN | 22.31/21.24 | 22.55/21.16 | 19.6/19.1 | 19.6/19.1 | 19.6/19.1 | 19.6/19.1 | 22.31/21.24 | 22.55/21.16 | 17.9-19.6/17.3-19.1 | 17.9-19.6/17.3-19.1 | 17.9-19.6/17.3-19.1 |
| 24 | Max. Gradeability (Full Load) | % | 20 | 20 | 29 | 29 | 26 | 23 | 20 | 20 | 26-29 | 26-29 | 23-26 |
| 25 | Tyre (Front x 2) | mm | 6.50-10-10PR | 6.50-10-10PR | 7.00-12-12PR | 7.00-12-12PR | 28-9-15-14PR | 28-9-15-14PR | 6.50-10-10PR | 6.50-10-10PR | 7.00-12-12PR | 7.00-12-12PR | 28-9-15-14PR |
| 26 | Tyre (Rear x 2) | mm | 5.00-8-10PR | 5.00-8-10PR | 6.00-9-10PR | 6.00-9-10PR | 6.50-10-10PR | 6.50-10-10PR | 5.00-8-10PR | 5.00-8-10PR | 6.00-9-10PR | 6.50-10-10PR | 6.50-10-10PR |
| 27 | Front Tread | B2(mm) | 902 | 902 | 970 | 970 | 1000 | 1000 | 902 | 902 | 970 | 970 | 1000 |
| 28 | Rear Tread | B3(mm) | 928 | 928 | 980 | 980 | 980 | 980 | 928 | 928 | 980 | 980 | 980 |
| 29 | Wheelbase | Y(mm) | 1450 | 1450 | 1650 | 1650 | 1700 | 1700 | 1450 | 1450 | 1650 | 1650 | 1700 |
| 30 | Total Weight | kg | 2693 | 2925 | 3777 | 4017 | | | | | | | |